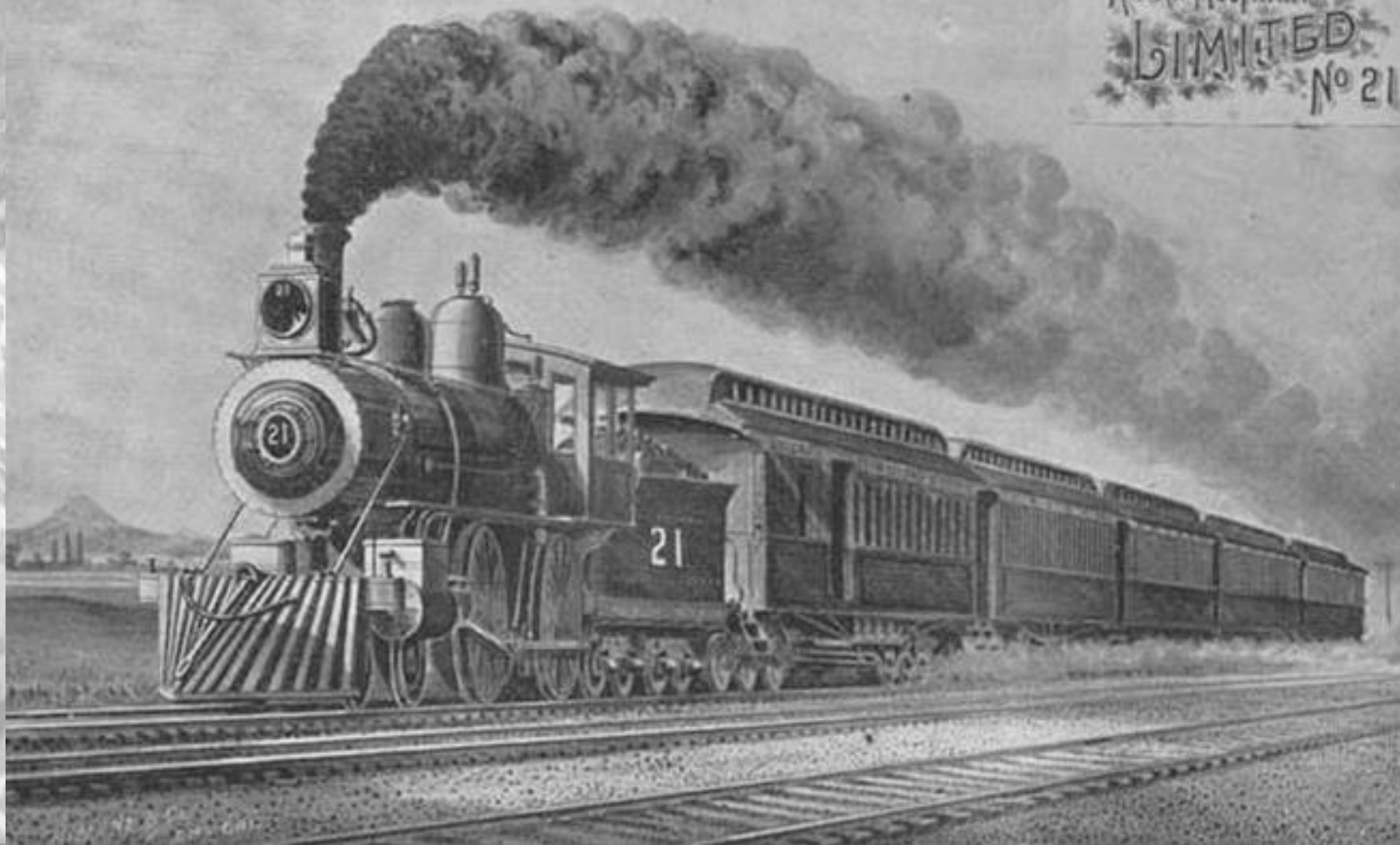
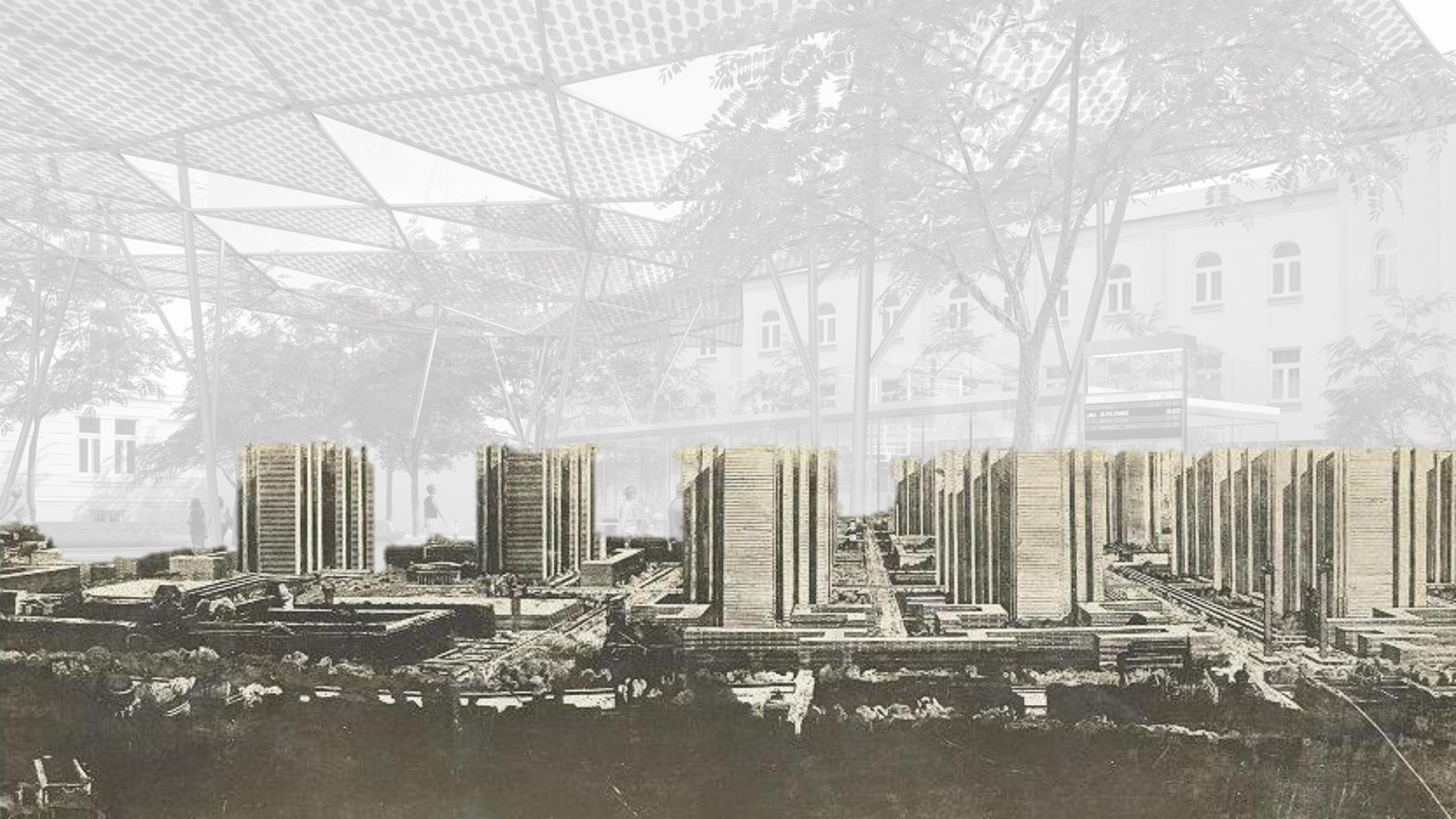


Rocky Mountain  
LIMITED  
No 21









Plzeň, regenerace historického jádra





Plzeň, regenerace historického jádra

# Helsinki Satamakoti



# Helsinki Satamakoti





# Helsinki Satamakoti



An aerial photograph of Ústí nad Orlicí, showing a mix of residential houses, industrial buildings, and green spaces. A prominent white industrial building with a red roof and a tall chimney is visible in the center. The city is surrounded by trees and greenery. The image is framed by a semi-transparent grey border on the left and right sides, which contains faint architectural drawings of buildings.

Perla 01, Ústí nad Orlicí

An aerial photograph of a city, showing a mix of old and new buildings. The old buildings are mostly multi-story structures with red-tiled roofs and traditional architectural styles. The new buildings are more modern, with flat roofs and large windows. A prominent feature is a tall, brick chimney stack. The city is surrounded by greenery and trees. The text "Perla 01, Ústí nad Orlicí" is overlaid on the bottom left of the image.

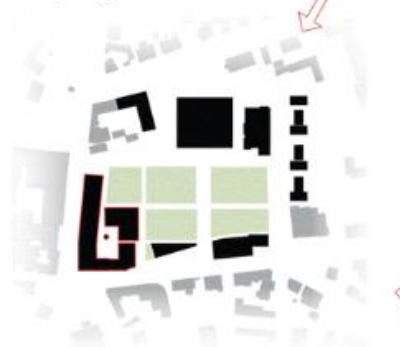
Perla 01, Ústí nad Orlicí

We have made the whole area accessible and created several options that the city and the private investor can follow.

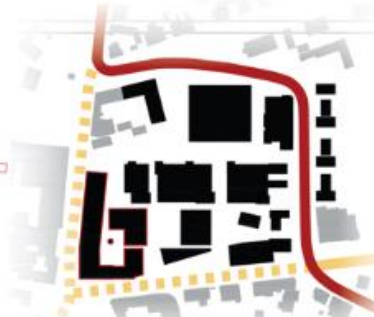


One of the options: use and adaptation of current halls and their completion according to the needs of the city.

One of the options: radical rebuilding and demolition of halls and preparation for a future project.



Only the most valuable structure is preserved. The problematic parts are removed and replaced by a new concept.



We moved the main transport structure behind the area and calmed down whole location.

We started in 2014



In the present preserved structure, new projects are being created and the site starts to function as an independent part of the city.



Based on all the possibilities, a compact neighborhood is created and the new functional part of the city is integrated into the rest of the structure.



Our vision of completing the project is over the next few years.



Perla 01, Ústí nad Orlicí



Smíchov City, Praha: centrální bulvár a dva parky



Smíchov City Sever, Praha (laskavostí A69)



Smíchov City Jih, Praha (laskavostí Baumschlager Eberle + Hnilička)





Smíchov City, Praha: centrální bulvár a dva parky



**SKATE PARK**



**INTERACTIVE  
PARK**



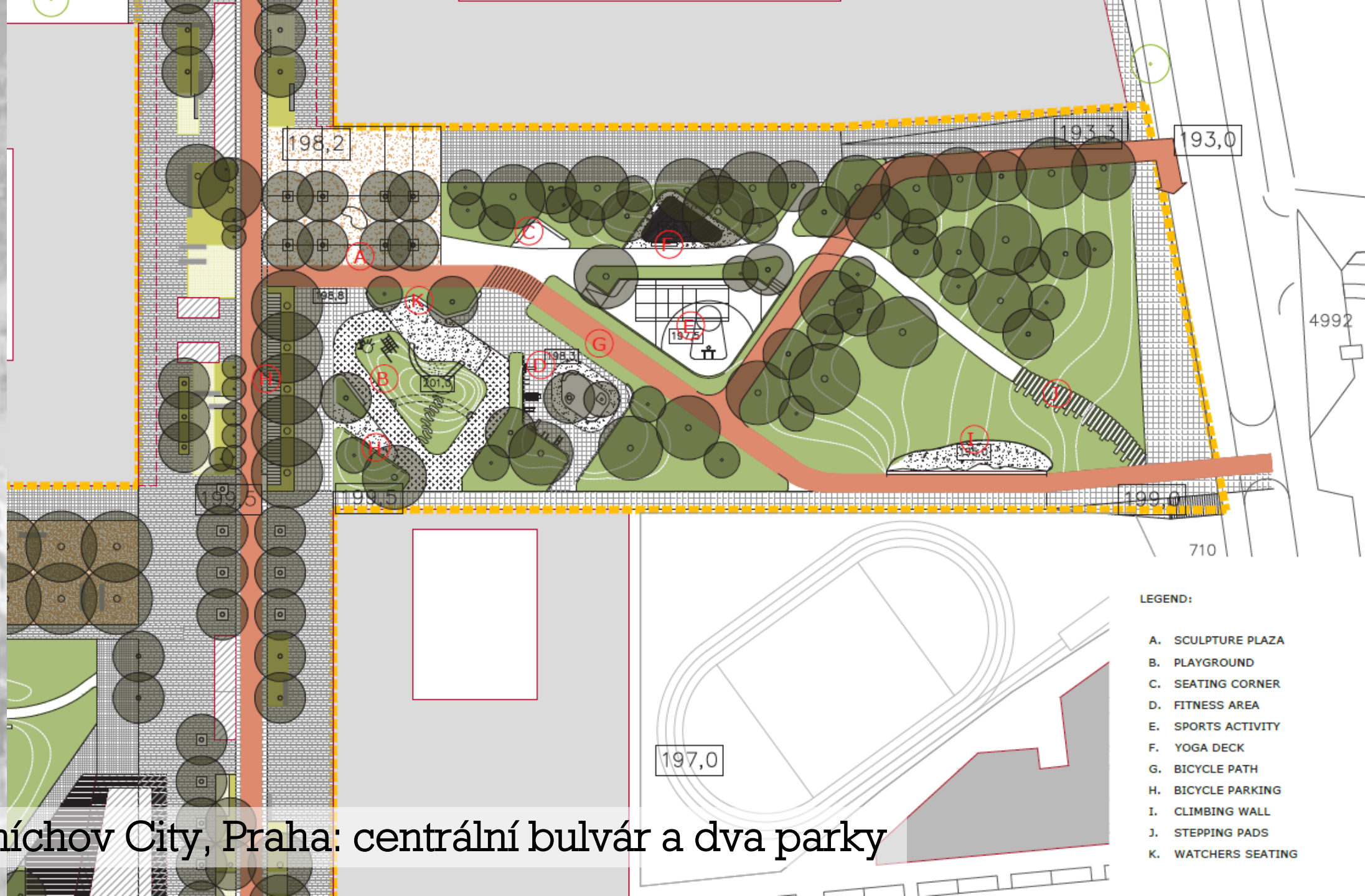
**NATURAL PARK**



Smíchov City, Praha: centrální bulvár a dva parky

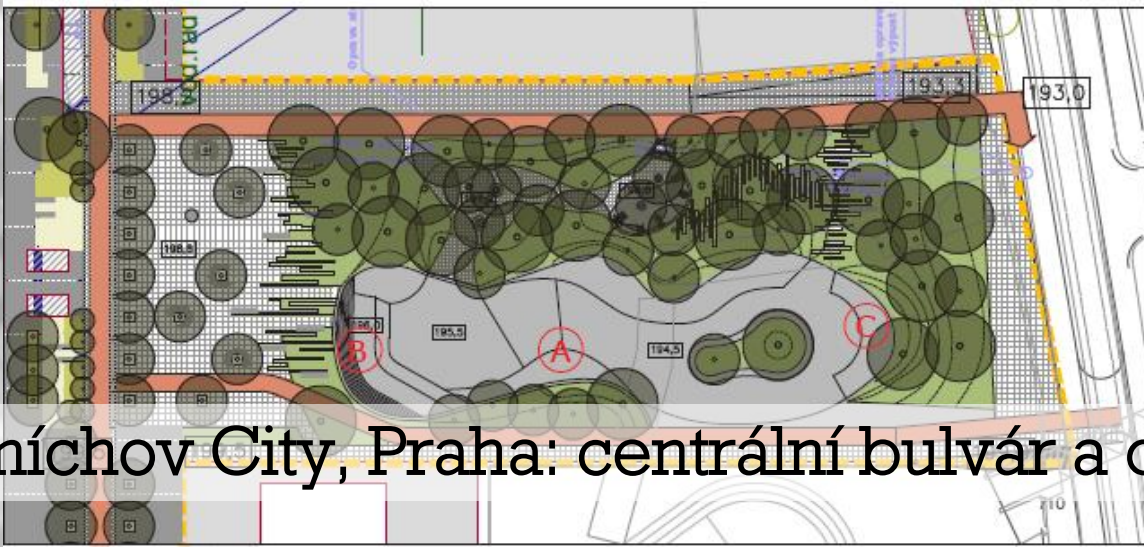


# Smíchov City, Praha: centrální bulvár a dva parky



## LEGEND:

- A. SCULPTURE PLAZA
- B. PLAYGROUND
- C. SEATING CORNER
- D. FITNESS AREA
- E. SPORTS ACTIVITY
- F. YOGA DECK
- G. BICYCLE PATH
- H. BICYCLE PARKING
- I. CLIMBING WALL
- J. STEPPING PADS
- K. WATCHERS SEATING



Smíchov City, Praha: centrální bulvár a dva parky



LEGEND:

- A. PIVO BAR
- B. TIMBER DECK
- C. OPEN PLAZA
- D. PERFORMANCE STAGE
- E. BLEACHERS
- F. PEDESTRIAN PATH
- G. BICYCLE PATH
- H. PEDESTRIAN ACCESS

Smíchov City, Praha: centrální bulvár a dva parky



Smíchov City, Praha: centrální bulvár a dva parky



Smíchov City, Praha: centrální bulvár a dva parky



UJEP Ústí nad Labem – pavilon přírodovědných a technických oborů





UJEP Ústí nad Labem – pavilon přírodovědných a technických oborů



UJEP Ústí nad Labem – pavilon přírodovědných a technických oborů



Linde Pohony, Český Krumlov: Market



nadnárodní výrobce hraček, Kladno: návštěvnická a sociální zóna



Děkuji za pozornost. [sourek@wemakespaces.archi](mailto:sourek@wemakespaces.archi)